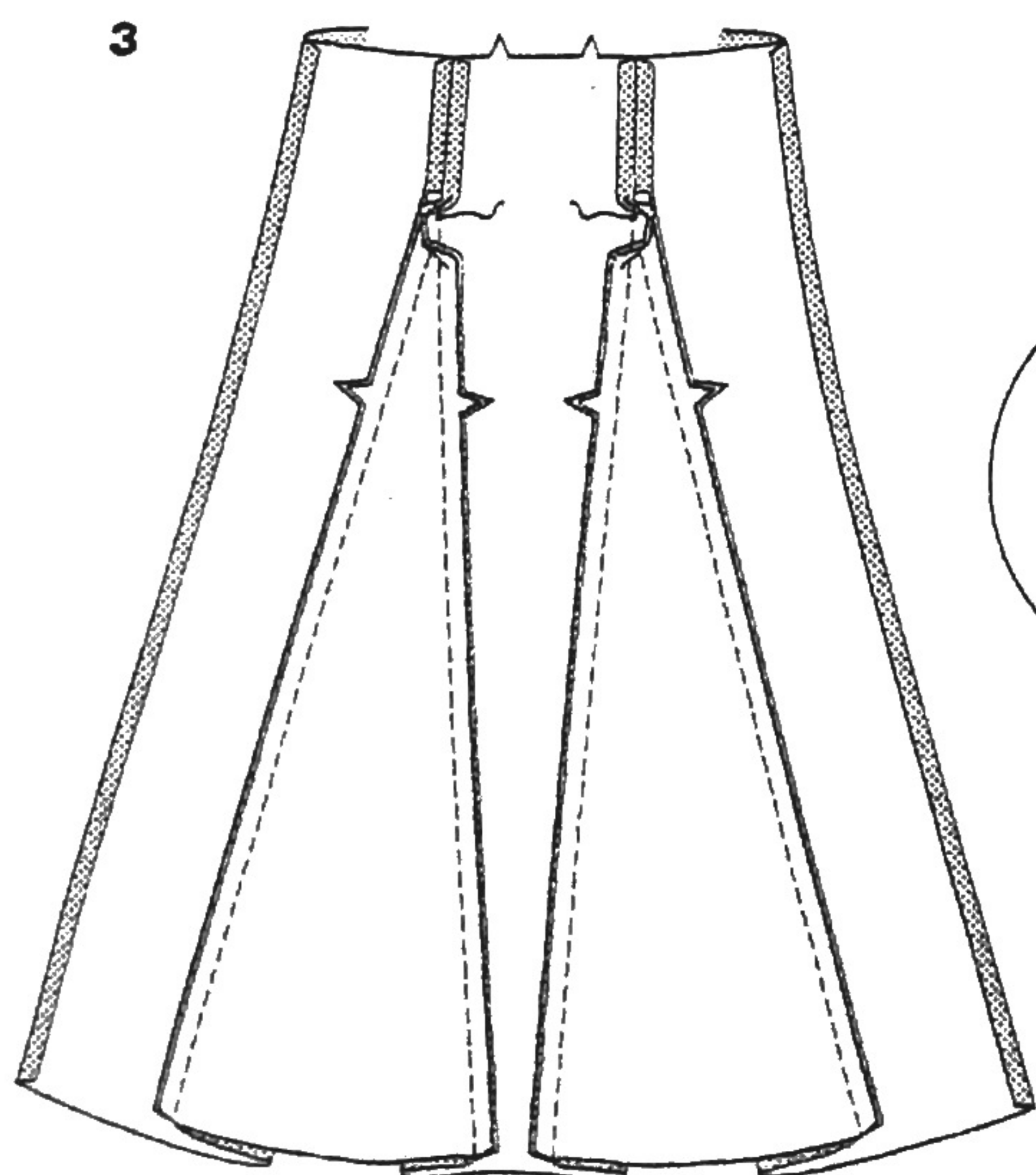
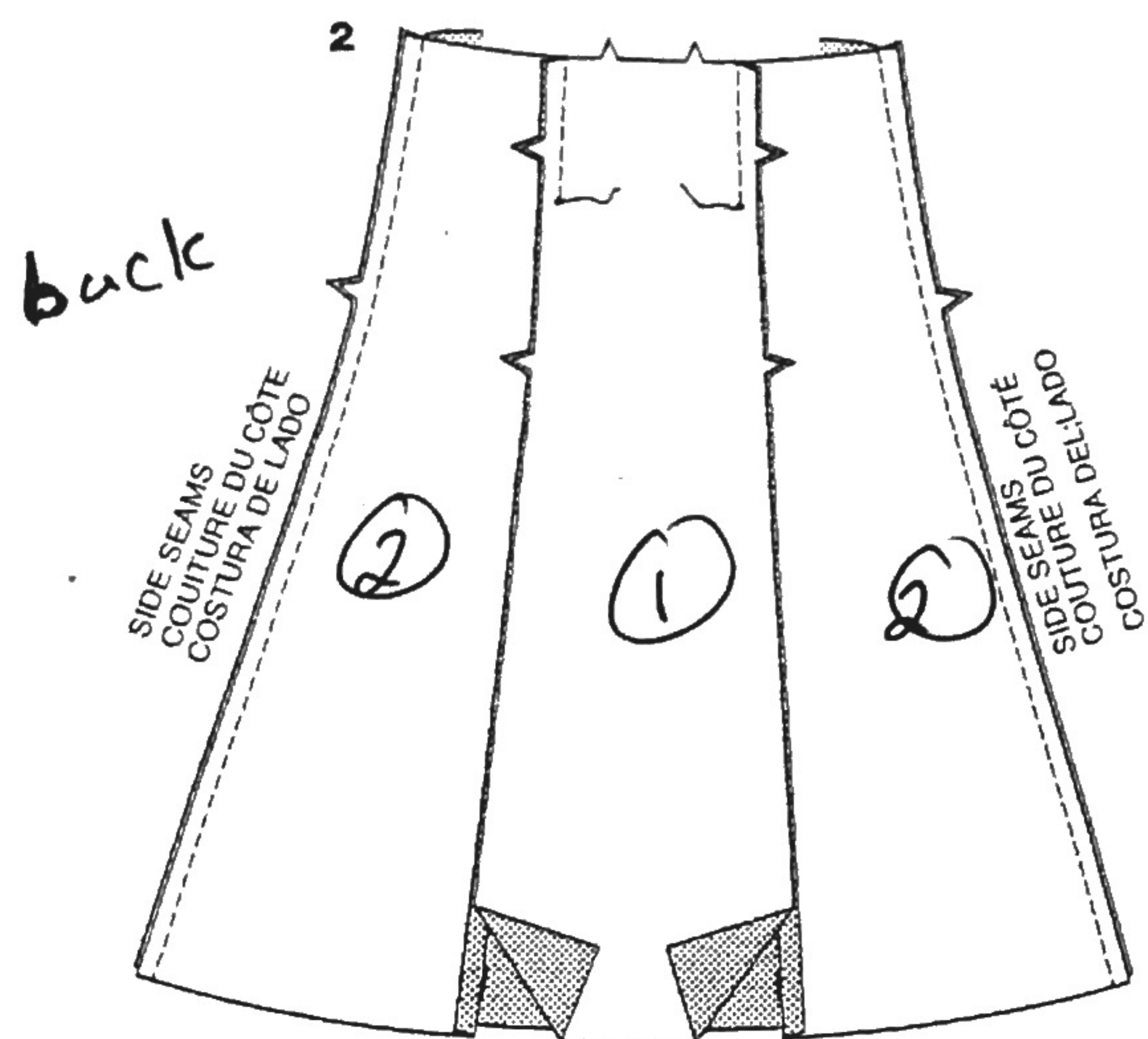
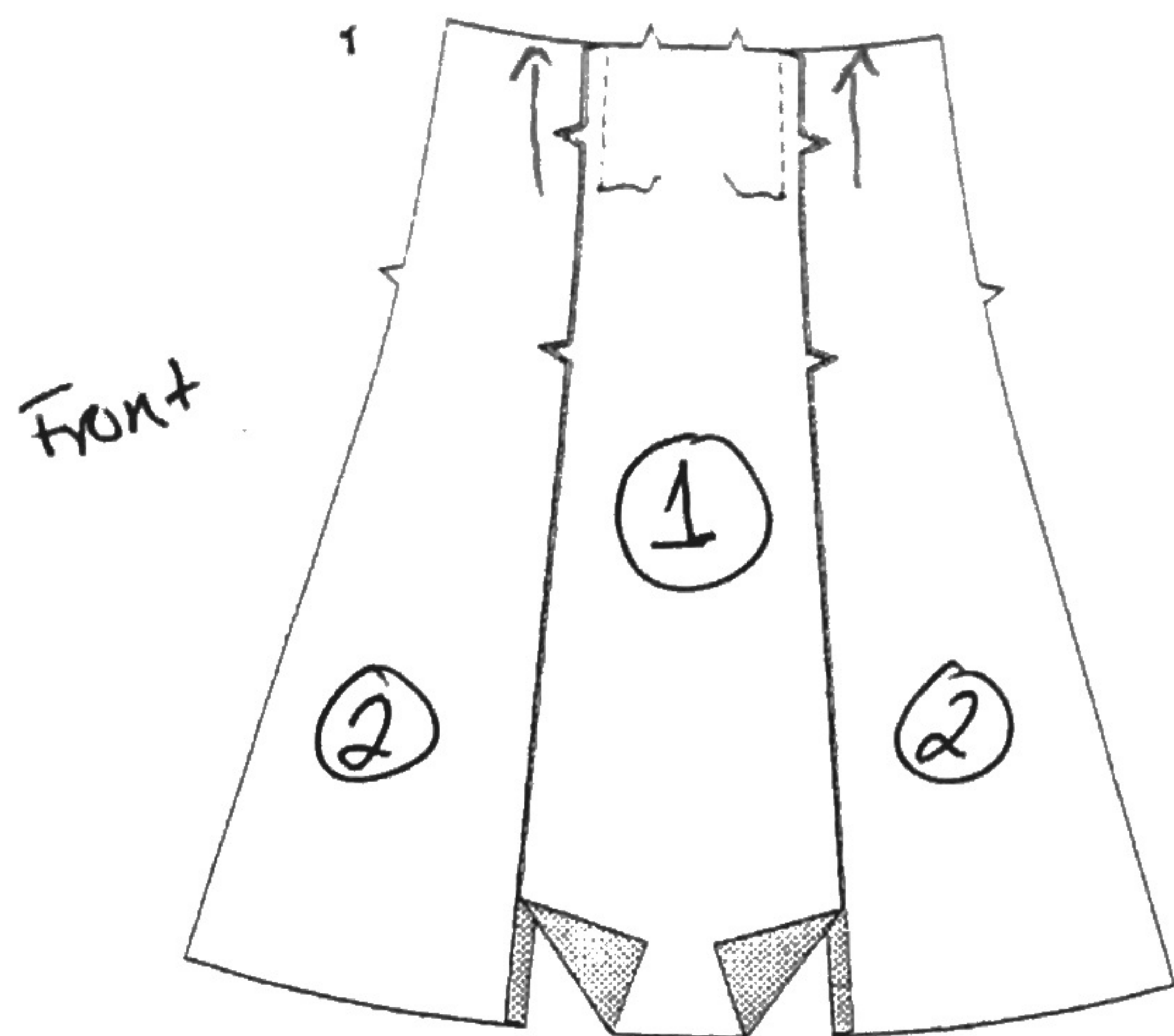


1856

RIGHT SIDE  
ENDROI  
DERECHOWRONG SIDE  
ENVERS  
REVES DE LA TELAINTERFACING  
ENTOILAGE  
ENTRETELALINING  
DOUBLURE  
FORRO

## English

## Sewing Directions

- SEW garment following Sewing Directions.
- PIN or machine-baste seams matching notches.
- STITCH 5/8" (1.5 cm) seams unless otherwise stated.
- PRESS seams open unless otherwise indicated clipping when necessary so seams will lie flat.

## SKIRT A, B

NOTE: Skirt is worn 1" (2.5cm) below waist.

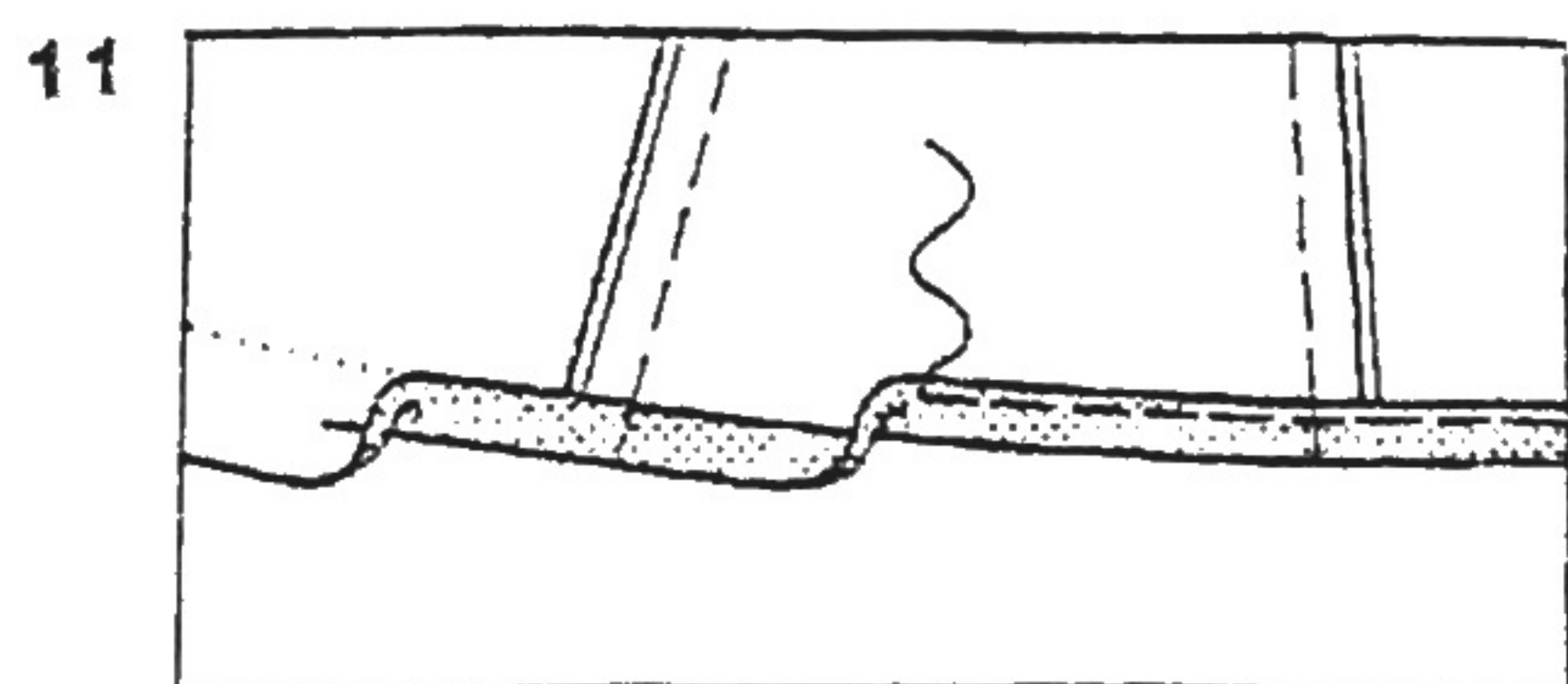
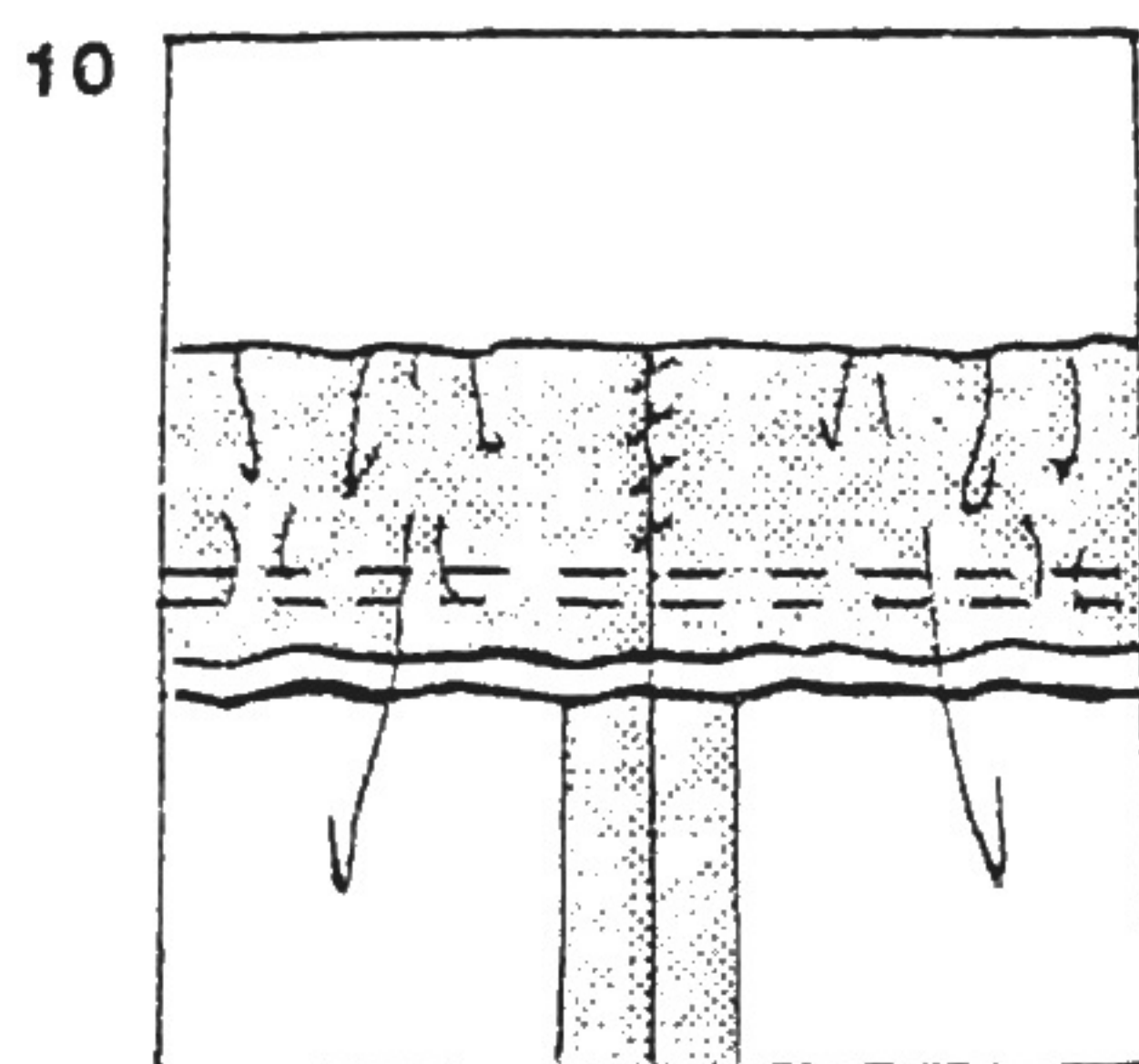
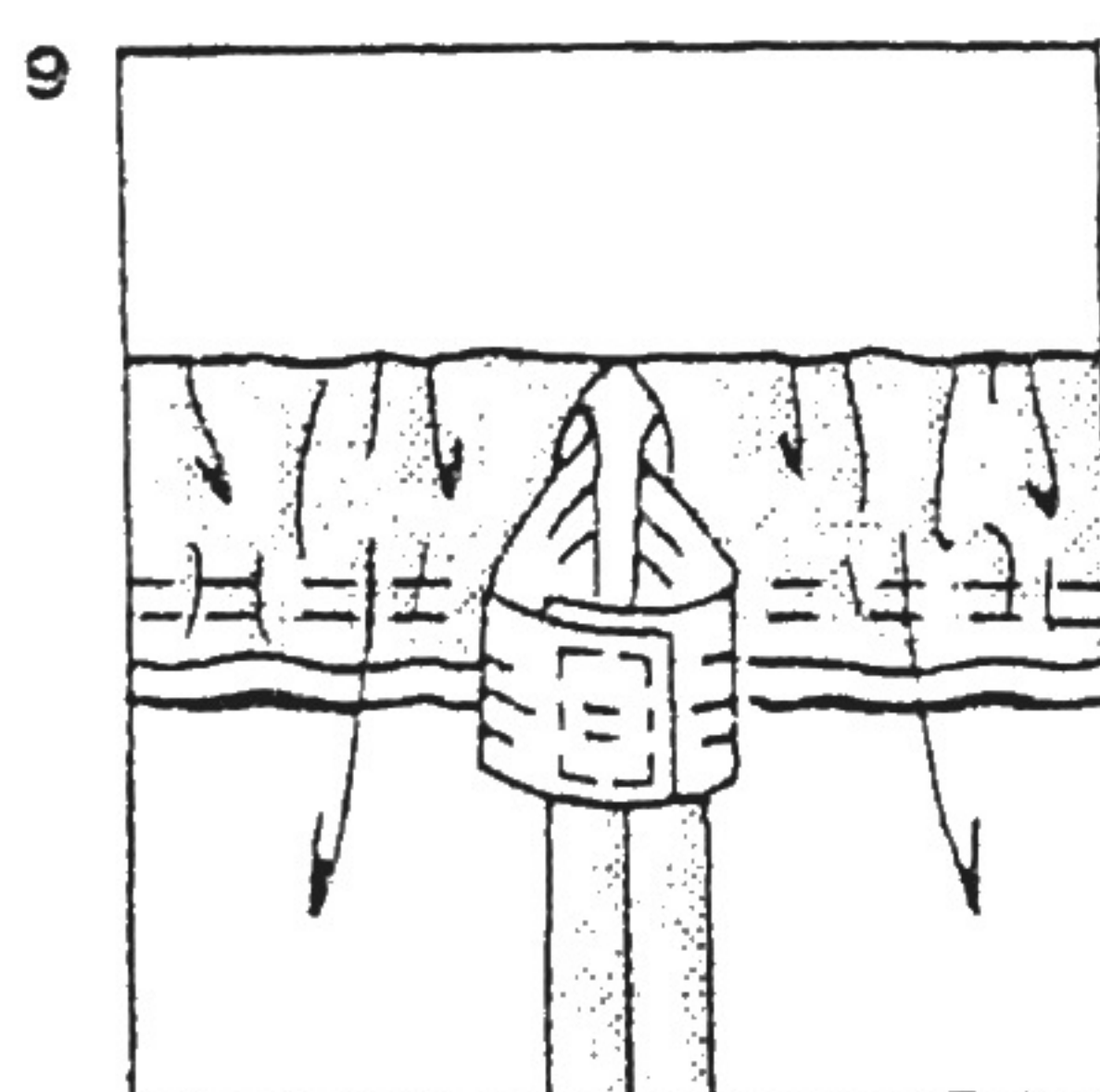
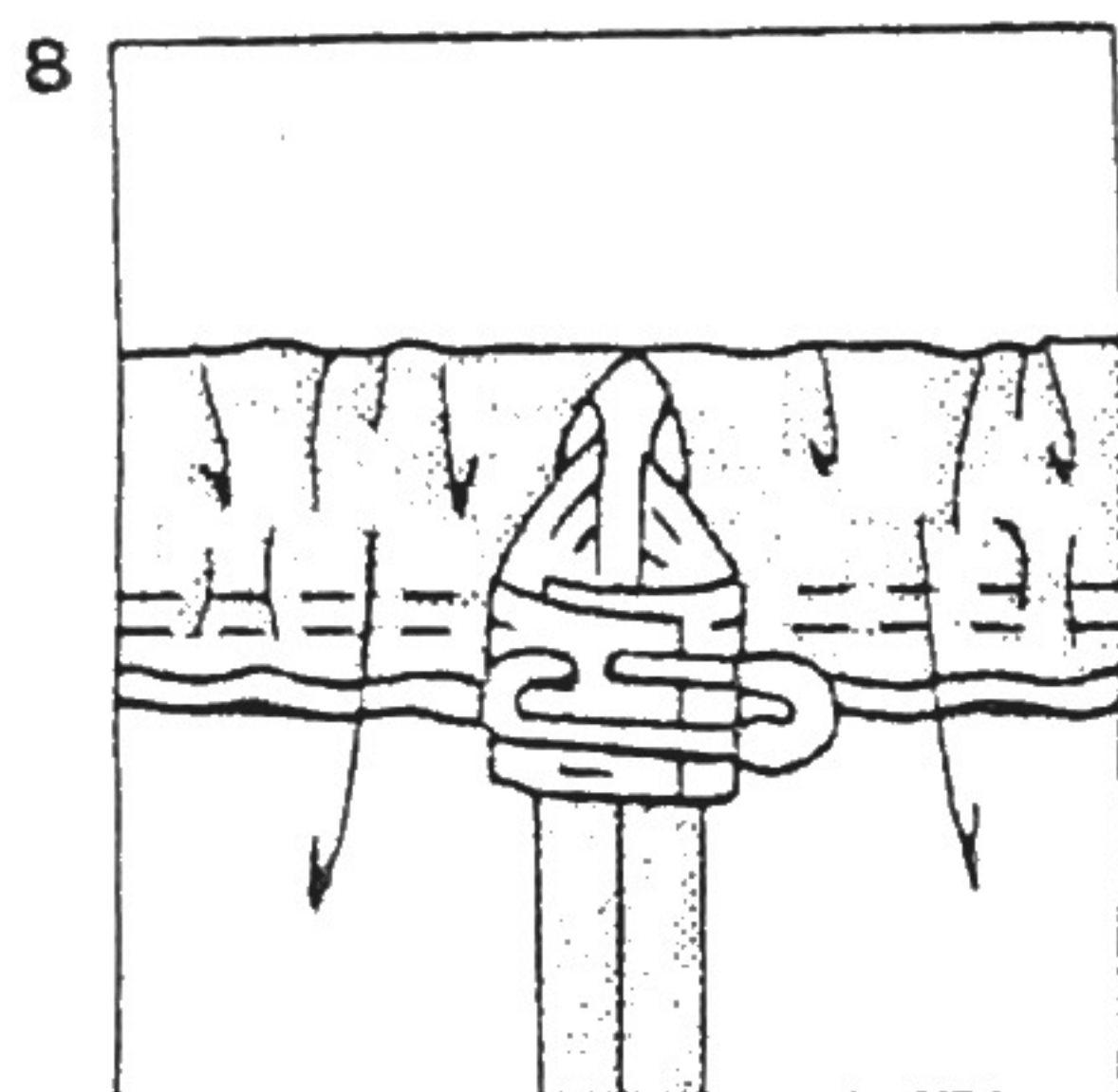
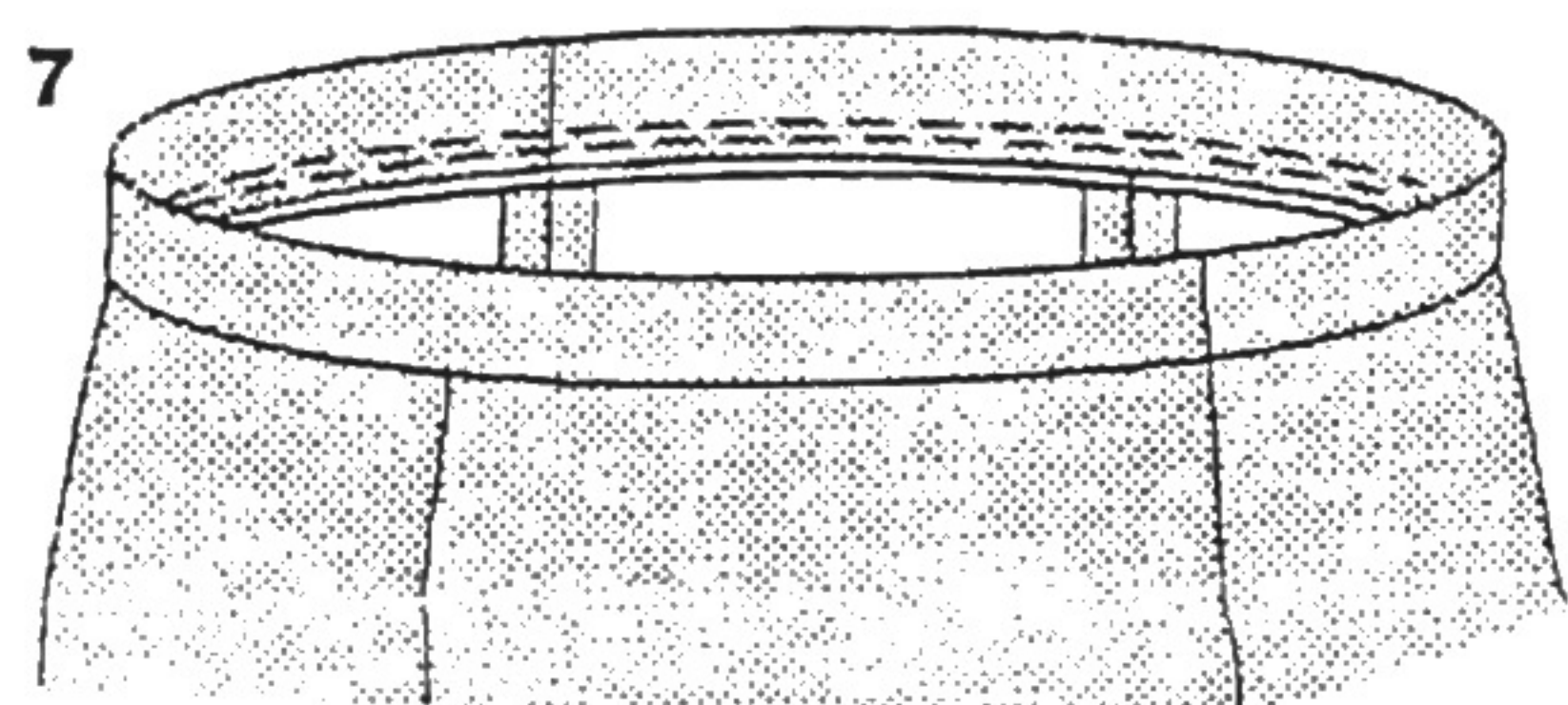
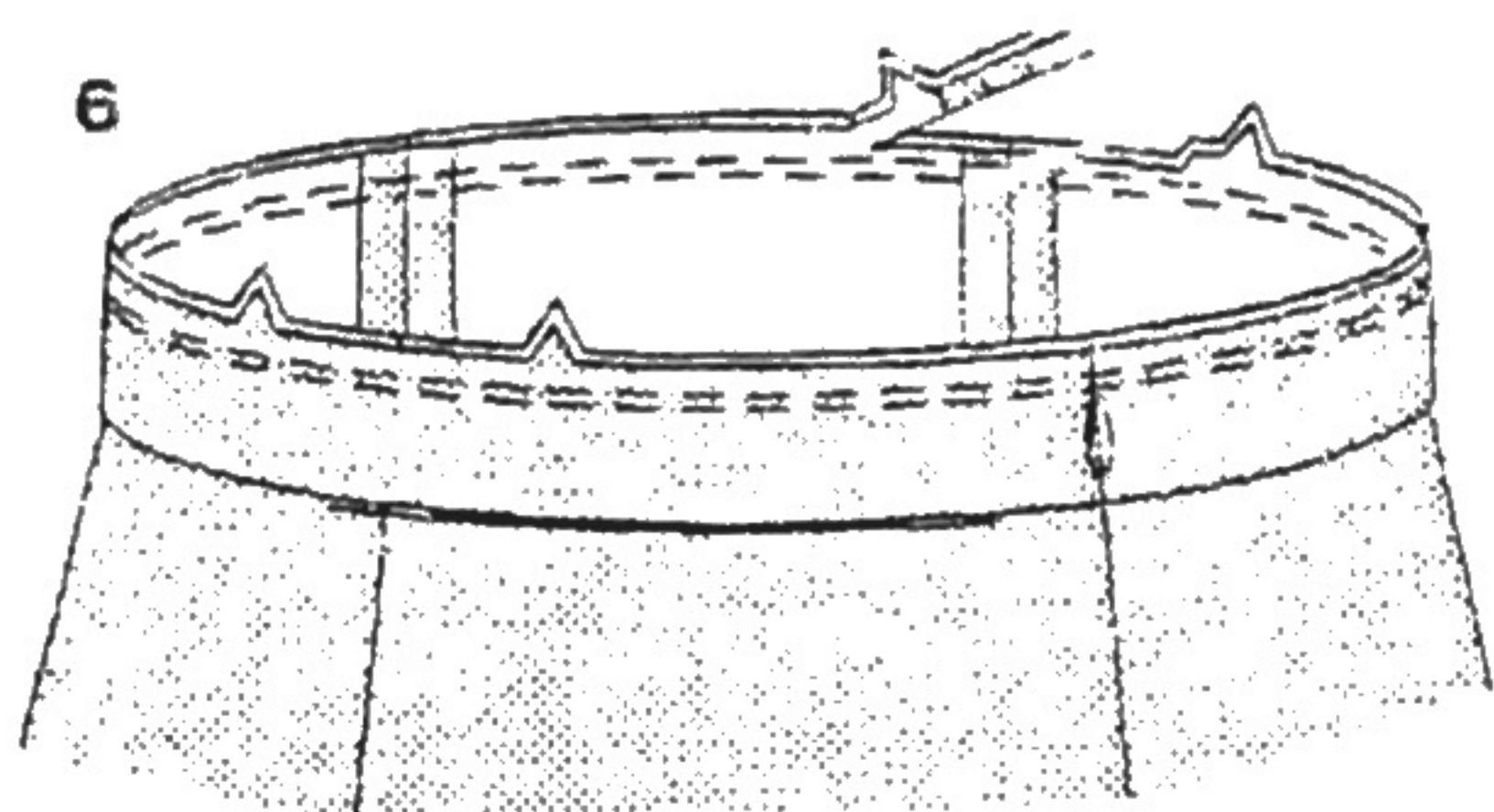
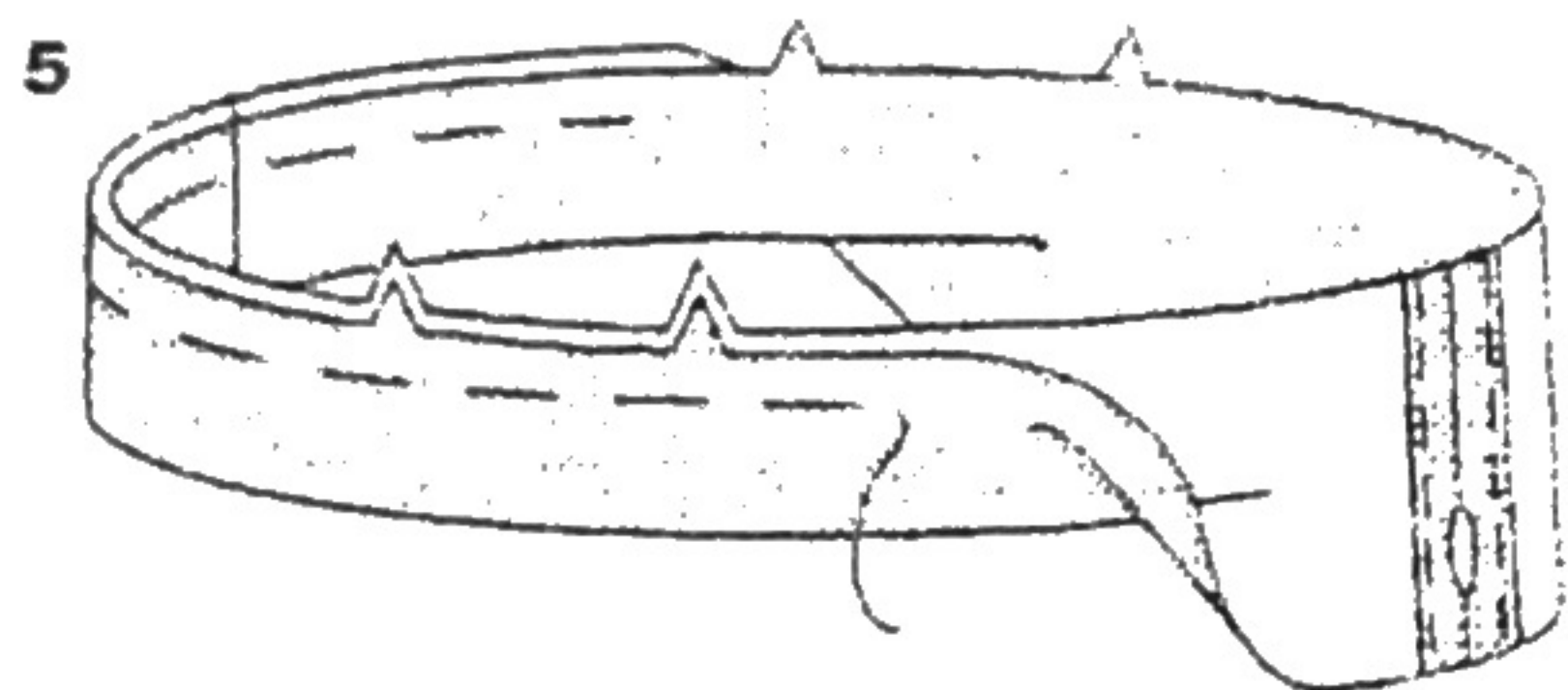
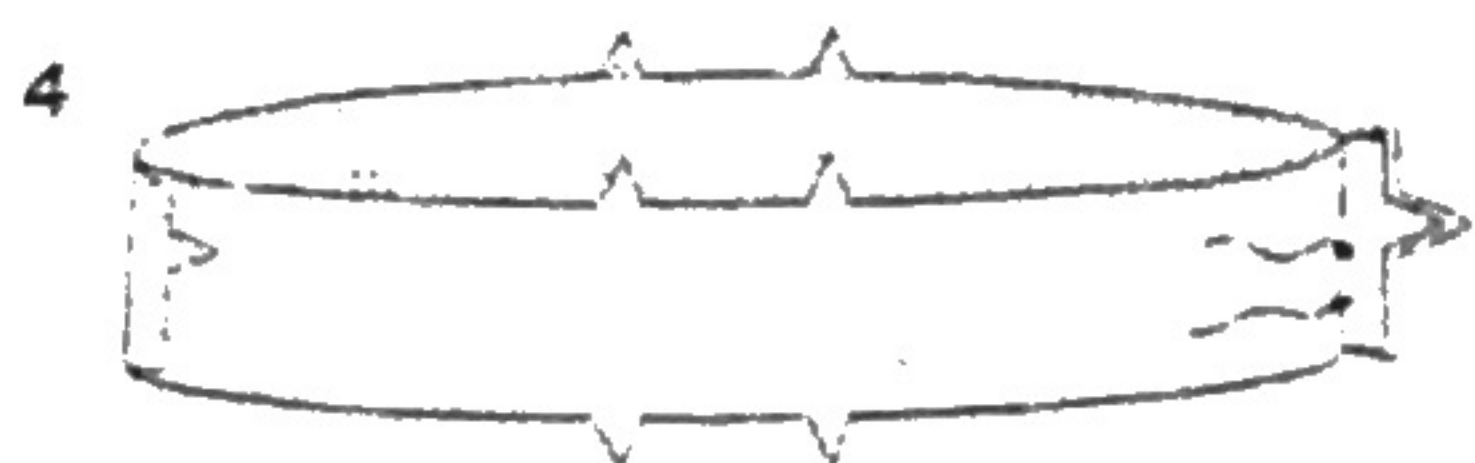
1. Stitch front to side front sections from small dot to upper edge, back-stitching at small dot to reinforce seams.

(Do again for back)

2. Stitch back to side back sections from small dot to upper edge, back-stitching at small dot to reinforce seams. Stitch front to back at side seams.

3. With RIGHT sides together, pin godet sections to skirt, matching small dots. Stitch seams, breaking and reinforcing stitching at small dots. Press seams away from godet.





4. With RIGHT sides together, stitch side seams of casing, leaving an opening in LEFT side seam between small dots as shown. Back-stitch at small dots to reinforce seam.  
Press seams open.

5. To keep elastic from getting stuck in the seam allowances as it's inserted, use fusible web or machine-basting to anchor them to the casing. Be sure to remove basting after casing is finished.  
Fold casing in half, lengthwise, with WRONG sides together, having raw edges even. Baste raw edges together. The side with the opening is the underside of the casing.

6. With the underside of casing facing you, pin casing to garment matching centers and side seams.  
Stitch along seam line. Stitch again 1/4" (6mm) from first stitching within seam allowance. Trim close to second stitching.

7. Press seam toward garment, pressing casing out.

8. Cut a piece of elastic the length of elastic guide.  
Insert elastic through opening in casing.  
Overlap ends and hold with a safety pin.

9. Try on skirt. Adjust the elastic to fit comfortably so that the top of the casing is 1" (2.5cm) below your natural waistline.  
Stitch ends of elastic together securely.

10. Slip-stitch opening edges of casing together.  
Distribute fullness evenly. Remove basting.  
TIP - To secure elastic so it won't twist in wearing, stitch through all thicknesses of casings in the groove of each seam.

11. Mark length.  
Press up hem along marking.  
Mark depth of hem; trim evenly.  
To form narrow hem, tuck under raw edge to meet crease.  
Press.  
Stitch hem in place.